



**University of  
Zurich**<sup>UZH</sup>

**Zurich Open Repository and  
Archive**

University of Zurich  
Main Library  
Strickhofstrasse 39  
CH-8057 Zurich  
[www.zora.uzh.ch](http://www.zora.uzh.ch)

---

Year: 2012

---

## **Discovery of serum proteomic biomarkers for prediction of response to infliximab (a monoclonal anti-TNF antibody) treatment in rheumatoid arthritis: an exploratory analysis**

Ortea, Ignacio ; Roschitzki, Bernd ; Ovalles, Juan Gabriel ; Longo, Javier López ; de la Torre, Inmaculada ; González, Isidoro ; Gómez-Reino, Juan J ; González, Antonio

**Abstract:** Biologics such as TNF antagonists are a new class of drugs that have greatly improved Rheumatoid Arthritis (RA) treatment. However, for unknown reasons, individual patients with RA respond to one of these drugs but not to others even those targeting the same molecule. Methods to predict response are sorely needed because these drugs are currently selected by trial and error, what is very inefficient and prejudicial for the patient and the healthcare system. Here, we have explored the discovery of protein biomarkers in serum from patients treated with infliximab, one of the major anti-TNF drugs. The study was based in a quantitative proteomics approach using 8-plex iTRAQ labeling. It combined depletion of the most abundant serum proteins, two-dimensional LC fractionation, protein identification and relative quantification with a hybrid Orbitrap mass spectrometer. This approach allowed the identification of 315 proteins of which 237 were confidently quantified with two or more peptides. The detection range covered up to 6 orders of magnitude including multiple proteins at the ng/mL level. A new set of putative biomarkers was identified comprising 14 proteins significantly more abundant in the non-responder patients. The differential proteins were enriched in apolipoproteins, components of the complement system and acute phase reactants. These results show the feasibility of this approach and provide a set of candidates for validation as biomarkers for the classification of RA patients before the beginning of treatment, so that anticipated non-responders could be treated with an alternative drug.

DOI: <https://doi.org/10.1016/j.jprot.2012.09.011>

Posted at the Zurich Open Repository and Archive, University of Zurich

ZORA URL: <https://doi.org/10.5167/uzh-90550>

Journal Article

Accepted Version

Originally published at:

Ortea, Ignacio; Roschitzki, Bernd; Ovalles, Juan Gabriel; Longo, Javier López; de la Torre, Inmaculada; González, Isidoro; Gómez-Reino, Juan J; González, Antonio (2012). Discovery of serum proteomic biomarkers for prediction of response to infliximab (a monoclonal anti-TNF antibody) treatment in rheumatoid arthritis: an exploratory analysis. *Journal of Proteomics*, 77:372-382.

DOI: <https://doi.org/10.1016/j.jprot.2012.09.011>

1       **Discovery of serum proteomic biomarkers for prediction of**  
2       **response to infliximab (a monoclonal anti-TNF antibody)**  
3       **treatment in Rheumatoid Arthritis: an exploratory analysis**

4  
5   Ignacio Ortea<sup>1</sup>, Bernd Roschitzki<sup>2</sup>, Juan Gabriel Ovalles<sup>3</sup>, Javier López Longo<sup>3</sup>,  
6   Inmaculada de la Torre<sup>3</sup>, Isidoro González<sup>4</sup>, Juan J. Gómez-Reino<sup>1,5</sup>, Antonio González<sup>1</sup>

7  
8   1.- Laboratorio Investigacion 10 and Rheumatology Unit. Instituto de Investigacion  
9   Sanitaria - Hospital Clínico Universitario de Santiago, Santiago de Compostela, Spain.

10   2.- Functional Genomics Center Zurich, University and ETH Zurich, Switzerland.

11   3.- Rheumatology Unit. Hospital Gregorio Marañón, Madrid, Spain.

12   4.- Rheumatology Unit. Hospital de la Princesa, Madrid, Spain.

13   5.- Department of Medicine, University of Santiago de Compostela, Santiago de  
14   Compostela, Spain.

15  
16  
17   **Corresponding author:**

18   Ignacio Ortea

19   e-mail: nachoog@iim.csic.es

20   Laboratorio Investigacion 10 and Rheumatology Unit. Instituto de Investigacion  
21   Sanitaria - Hospital Clínico Universitario de Santiago, c/Choupana, ES15703, Santiago  
22   de Compostela, Spain.

23   Tel.:+34 981 955 090; fax: +34 981 950 538

24

1 **Abstract**

2 Biologics such as TNF antagonists are a new class of drugs that have greatly improved  
3 Rheumatoid Arthritis (RA) treatment. However, for unknown reasons, individual  
4 patients with RA respond to one of these drugs but not to others even those targeting the  
5 same molecule. Methods to predict response are sorely needed because these drugs are  
6 currently selected by trial and error, what is very inefficient and prejudicial for the  
7 patient and the healthcare system. Here, we have explored the discovery of protein  
8 biomarkers in serum from patients treated with infliximab, one of the major anti-TNF  
9 drugs. The study was based in a quantitative proteomics approach using 8-plex iTRAQ  
10 labeling. It combined depletion of the most abundant serum proteins, two-dimensional  
11 LC fractionation, protein identification and relative quantification with a hybrid  
12 Orbitrap mass spectrometer. This approach allowed the identification of 315 proteins of  
13 which 237 were confidently quantified with two or more peptides. The detection range  
14 covered up to 6 orders of magnitude including multiple proteins at the ng/mL level. A  
15 new set of putative biomarkers was identified comprising 14 proteins significantly more  
16 abundant in the non-responder patients. The differential proteins were enriched in  
17 apolipoproteins, components of the complement system and acute phase reactants.  
18 These results show the feasibility of this approach and provide a set of candidates for  
19 validation as biomarkers for the classification of RA patients before the beginning of  
20 treatment, so that anticipated non-responders could be treated with an alternative drug.

21

22 **Keywords:** rheumatoid arthritis, infliximab, serum biomarkers, response prediction.

23

24 **Running title:** Biomarkers for prediction of response to infliximab in RA.

25

26

27

28

29

30

31

32

33

## 1 Introduction

2  
3 Rheumatoid arthritis (RA) is a chronic systemic autoimmune disease of complex  
4 etiology comprising genetic and environmental factors that is characterized by  
5 inflammation in multiple joints [1]. Left without treatment, it progresses to disability,  
6 deformities due to bone erosion and life shortening. RA prevalence is about 1% of the  
7 world population. Classical treatments are still commonly used, but they are not  
8 sufficiently effective for many patients. In the last decade, new drugs became available  
9 in the group of biologics (monoclonal antibodies, soluble receptors or other complex  
10 molecules targeting specific players in the disease process). The first that were available  
11 for RA treatment were the tumor necrosis factor (TNF) antagonists. Among them,  
12 infliximab, a chimeric antibody comprising a human IgG1 constant fraction and a  
13 murine variable region targeting membrane and soluble TNF [2], has become one of the  
14 biologics most commonly used in RA.

15 Biologics have greatly improved RA treatment but none of them is effective in  
16 all patients. For unknown reasons, about a third of the patients in whom one of these  
17 drugs is assayed fail to show significant improvement. These patients can respond to an  
18 alternative biologic targeting the same or a different molecule [3]. Currently, clinical or  
19 laboratory methods for the prediction of patients response are not available. Therefore,  
20 the only approach to select biologics for a particular RA patient is by trial and error.  
21 This approach is associated with notable inefficiency and prejudices because  
22 responsiveness can only be assessed after three to six months of treatment. During this  
23 time, patients suffer uncontrolled disease with the potential of irreversible damage, and  
24 the healthcare system expends large amounts in ineffective drugs. Thus, it is necessary  
25 to find biomarkers that make possible the identification of non-responder patients in  
26 advance, to treat them with an alternative drug from the beginning. Many studies have  
27 already tried to identify this type of biomarkers in the genetics, functional genomics,  
28 proteomics, autoantibody and clinical fields, but no reproducible and informative  
29 findings have yet been reported [4].

30 Very few proteomic studies have attempted to identify biomarkers for prediction  
31 of response to biologics in RA. A couple of studies analyzed selected cytokines or  
32 cytokines plus RA autoantibodies showing that some of them were associated with  
33 clinical response to the TNF antagonist etanercept [5,6]. By contrast, not a single  
34 cytokine was associated with response to a different biologic, rituximab, in a similar

1 study [7]. The unique previous agnostic proteomic study was done by Trocmé et al. [8].  
2 These authors used SELDI-TOF technology to identify plasma biomarkers for  
3 prediction of response to infliximab. Six potential biomarkers were detected, although  
4 only two proteins were identified. None of the previous studies have been independently  
5 replicated. This paucity of proteomic research on biomarkers for prediction of response  
6 contrasts with the multiple studies searching RA diagnostic and prognostic biomarkers  
7 [9-20], and with several proteomic studies monitoring the changes that take place after  
8 the administration of different drugs [7,16,21,22].

9 Isobaric Tags for Relative and Absolute Quantitation (iTRAQ) is a quantitative  
10 proteomic approach ideally suited for biomarker discovery. It provides quantification,  
11 identification and multiplexing in a single assay. However, it has been scarcely used to  
12 study human serum and plasma. This is unfortunate because serum and plasma are  
13 informative for many diseases, especially for systemic diseases like RA, and easily  
14 available. The latter is very important when validating the potential biomarkers and also  
15 for their future widespread use. For example, patients with RA are not routinely  
16 subjected to synovial tissue biopsies and it will pose significant difficulties to  
17 implement them for drug selection. Unfortunately, discovery of biomarkers among the  
18 serum or plasma proteins is limited by their great complexity and wide dynamic range.  
19 Protein concentrations extend for more than 11 orders of magnitude with the top 10  
20 most abundant plasma proteins accounting for ~ 90% of the total proteins [23]. Disease  
21 biomarkers are usually present at low concentrations (~ ng/mL) [23], being masked by  
22 higher abundance proteins in 2-DE and being blurred in MS due to competitive  
23 ionization and signal suppression. Therefore, the quantitative and qualitative analysis of  
24 low abundance proteins is challenging. To overcome these problems, there is a need for  
25 (i) prefractionation methods to specifically remove the high abundance proteins; (ii)  
26 good separation techniques to further decrease protein complexity; and (iii) MS  
27 equipments with high sequencing speed and sensitivity. In this study, we have explored  
28 the performance of an approach including these characteristics. It was applied to the  
29 discovery of biomarkers for prediction of response in serum of patients with RA that  
30 had been prospectively evaluated during treatment with infliximab. The proteomics  
31 approach comprised an immunodepletion prefractionation step, a thorough 2-D LC  
32 fractionation and quantification of the differentially isotopic labeled peptides by  
33 MS/MS. Results were satisfactory because this approach allowed the identification of a  
34 large number of proteins, covering a wide dynamic range and including many proteins

1 in the ng/mL level, and identifying 14 putative biomarkers for prediction of response to  
2 infliximab that are consistent with our knowledge of the disease.

## 3 4 **Materials and Methods**

### 5 6 *Ethics approval*

7  
8 The project was approved by the Ethics Committee for Clinical Research of  
9 Galicia and carried out according to the Helsinki Declaration Principles. All  
10 participating subjects gave their written informed consent.

### 11 12 *Sample collection*

13  
14 Patients with RA according to the American College of Rheumatology (ACR)  
15 classification criteria [24] from a single center (Gregorio Marañón Hospital, Madrid,  
16 Spain) were enrolled in the study. All were naive for any biologics before the start of  
17 the enrollment period. Blood was collected into 8 ml Vacuette Z Serum Sep Clot  
18 Activator tubes (Greiner Bio-One GmbH, Frickenhausen, Germany) before starting  
19 infliximab administration, left to clot at room temperature for 2 hours and then  
20 centrifuged at 3000 g for 10 min. The collected serum was aliquoted and stored at -80°C.  
21 Infliximab (Remicade; Centocor Inc., Malvern, PA) was given following the standard  
22 dose and administration schedule. Clinical response was determined 6 months after  
23 infliximab initiation according with the European League Against Rheumatism  
24 (EULAR) criteria based in the Disease Activity Score 28 (DAS28) [25]. Only patients  
25 classified as non-responder (NR, n = 4) or good responder (R, n = 4) were compared to  
26 increase the chances of finding differences. The intermediate class of moderate  
27 responders was excluded.

### 28 29 *Immunoaffinity depletion of high-abundance proteins*

30  
31 The six most abundant proteins in serum were depleted using the Hu-6 Multiple  
32 Affinity Removal System kit (Agilent Technologies, Wilmington, USA) following  
33 manufacturer's instructions. Afterwards, the remaining proteins were concentrated using  
34 5000 MWCO spin concentrators (Agilent Technologies) and acetone precipitation. The

1 resulting air-dried pellets were dissolved in 0.5 M triethylammonium bicarbonate  
2 (TEAB) pH 8.5 buffer and protein concentration was measured.

#### 3 4 *Protein digestion and iTRAQ labeling*

5  
6 For each sample, 40 µg of protein, at 1 mg/mL in 0.5 M TEAB pH 8.5 and 0.1%  
7 SDS, were reduced with 5 mM tris-(2-carboxyethyl) phosphine (TCEP) at 60°C for 1  
8 hour and cysteine-blocked with 10 mM methyl methanethiosulfonate (MMTS) at RT for  
9 10 min. The proteins were then digested with Sequencing Grade Modified trypsin  
10 (Promega, Madison, WI, USA) at a trypsin-to-protein ratio of 1:50, at 37°C for 6 hours.  
11 Each digest was labeled at 25°C for 3 h with one of the 8-plex iTRAQ reagents  
12 previously solubilized in 100 µl isopropanol, according to the manufacturer's  
13 instruction (AB Sciex, Framingham, MA, USA). The labeling reactions were stopped  
14 by adding phosphoric acid to reach pH below 4.0, and all iTRAQ-labeled samples were  
15 combined into one tube. Tryptic peptides were then dried by centrifugal evaporation.

#### 16 17 *Peptide fractionation with SCX chromatography*

18  
19 Peptides were fractionated using a PolyLC SCX Polysulphoethyl A 200 mm x  
20 2.1 mm, 5 µm, 200 A column (PolyLC, Columbia, MD, USA), on a high-pressure LC  
21 pump (1100-series, Agilent Technologies). Dried peptides were reconstituted in 600 µl  
22 buffer A, the pH was adjusted to 2.7 with H<sub>3</sub>PO<sub>4</sub>. The flow rate was kept at 0.2 ml/min,  
23 and the sample was fractionated using a two-buffer system (buffer A, 7mM KH<sub>2</sub>PO<sub>4</sub> in  
24 25% ACN pH 2.7; buffer B 7mM KH<sub>2</sub>PO<sub>4</sub>, 500 mM KCl in 25% ACN pH 2.7). The  
25 gradient employed was 0% B for 20 min, 0% to 5% B in 5 min, 5% to 35% B in 35 min,  
26 35% to 100% B in 10 min, 100% B for 5 min, and then 0% B for 25 min. Eluted  
27 peptides were monitored at 214 and 280 nm and collected from 20-25.7 min, 25.7-31.3  
28 min, 31.3-37.0 min, then every 2.4 min until 95 min. A total of 27 fractions were  
29 collected and then dried. An aliquot of 0.5 µl of each fraction was desalted by C18  
30 ZipTip tips (Millipore, Billerica, MA, USA) and analyzed by MALDI-TOF-TOF (4800,  
31 AB Sciex) MS to check its peptide complexity. The first three fractions were discarded,  
32 and the other 24 fractions were mixed in 12 final fractions according to their complexity.

#### 33 34 *Nano-reverse-phase LC-MS/MS*

1  
2 Combined fractions were desalted onto C18 spin tips (StageTips, Thermo Fisher  
3 Scientific, Waltham, MA, USA) lyophilized and dissolved on buffer A. Analysis by  
4 nanoHPLC-MS/MS was done using a NanoLC-Ultra system (Eksigent, Dublin, CA,  
5 USA) coupled to an Orbitrap Velos hybrid mass spectrometer (Thermo-Finnigan, San  
6 Jose, CA, USA). The separation was performed on a inhouse-made tip column (75  $\mu$ m  
7 id x 8 cm) packed with Magic RP C18 AQ, 200A, 3  $\mu$ m beads (Bischoff GmbH,  
8 Leonberg, Germany), at a flow rate of 250 nl/min. Water with 1% ACN and 100% ACN,  
9 both containing 0.2% formic acid, were used as solvents A and B, respectively. Peptides  
10 were loaded on the column for 16 min with 2% of solvent B and a flow rate of 500  
11 nl/min. Peptide elution was started using the following gradient of solvent B: 0 to 1 min  
12 2% to 10% B, 1 to 65 min 10% to 30% B, 65 to 70 min 30% to 45% B, 70 to 74 min  
13 45% to 97% B. The column was washed for 7 min with 97% B and then re-equilibrated  
14 for 9 min with 2% solvent B before the next run. The mass spectrometer was operated  
15 in data-dependent mode with the following ion scanning parameters: survey MS scan in  
16 FT mode from 300 to 2000 m/z (resolution 30000), followed by top eight peaks  
17 collision induced dissociation (CID) fragmentation (isolation width 2 m/z, normalized  
18 collision energy 35%) for identification, plus the same top eight peaks higher-energy  
19 collisional dissociation (HCD) fragmentation (isolation width 2 m/z, normalized  
20 collision energy 52%) and readout in the FT analyzer (resolution 7500) for  
21 quantification. Fragmented peptide masses were set in dynamic exclusion for 60 s and  
22 singly charged ions were excluded from MS/MS analysis. To improve sensitivity of the  
23 MS/MS analysis for peptides of low-abundance proteins, each fraction was run a second  
24 time excluding previously fragmented precursors.

25  
26 *Protein identification and protein relative abundance*

27  
28 Peptide and protein identification was performed with ProteinPilot software v4.0  
29 (AB Sciex) and the Paragon algorithm [26] by comparison with the human  
30 Swissprot/TrEMBL database (downloaded in December 2011). Paragon method  
31 parameters were: peptide labeled with iTRAQ 8plex, fixed modification of methyl  
32 methanethiosulfonate on Cys (+46 Da), digestion with trypsin, instrument Orbi/FT MS  
33 (1-3ppm) LTQ MS/MS, and ID focus on biological modification. Proteins having at  
34 least one peptide above the 95% confidence level as determined by Protein Pilot were



1 recorded. False discovery rates (FDR) were estimated using a concatenated target-decoy  
2 database [27]. For the estimation of the protein abundance ratio, the intensities of  
3 iTRAQ reporter ions for each MS/MS spectra were extracted from ProteinPilot and the  
4 sum ratio for each protein was calculated across the spectra matched to the  
5 corresponding peptides. Data were normalized for loading error by bias corrections  
6 using ProteinPilot. The statistical significance of the differences between the means for  
7 each group (R vs. NR) was determined on the transformed data (arc sin hyperbolic)  
8 using the two-tailed t-test. Threshold for significance was set at  $p < 0.05$ . A receiver  
9 operation characteristic (ROC) curve analysis was performed for each protein to obtain  
10 the area under curve (AUC). AUC was used as the summary statistic reflecting the  
11 overall predictive accuracy of each protein [28]. A model or test with perfect  
12 discriminatory ability will have an AUC of 1.0, while a model of random outcomes will  
13 have an AUC of 0.5. Interactions and pathways of proteins with fold differences  
14 between NR and R patients higher than 1.5 were analyzed with Ingenuity Pathway  
15 Analysis (IPA) software (Ingenuity Systems, Redwood City, CA, USA).

16

## 17 **Results and Discussion**

18

19 Figure 1 shows the discovery-driven 8-plex iTRAQ workflow used in this study.  
20 This workflow combines depletion of the highest abundance serum proteins, intensive  
21 fractionation of the depleted serum, and MS/MS based identification and quantification  
22 of the fractionated proteins. In the first step, sera were immunodepleted from the six  
23 highest abundance proteins on a human MARS-6 spin column. Reproducibility and  
24 protein recovery of this step were evaluated by 1-DE (Figure 2) and by total protein  
25 quantification. These analyses revealed uniform reduction of major protein bands and  
26 compensatory increases in other bands of lower concentration together with significant  
27 reduction of the total protein concentration. The mean protein recovery rate was 11.5%,  
28 which is in agreement with the column's manufacturer specifications. Subsequent MS  
29 analysis showed that this depletion step was effective because our protocol allowed the  
30 identification with strict criteria (at least 2 peptides and 95% confidence) of medium  
31 and low concentration proteins. Examples of identified proteins that are in the ng/mL  
32 range according with the bibliography were hepatocyte growth factor activator, sex  
33 hormone-binding globulin, alpha synuclein and retinoic acid receptor responder protein  
34 [29-32]. However, our protocol was not able to identify very rare proteins in the pg/mL

1 range. Since concentrations of the most abundant identified proteins are in the mg/mL  
2 level, the workflow used in this study allowed the detection of serum proteins with a  
3 dynamic range of up to  $10^6$ . A wide detection range is a necessary characteristic for  
4 effective proteomic analysis of serum given the complexity and heterogeneity of this  
5 biologic fluid.

### 6 7 *Identification of serum proteins*

8  
9 The next steps involved trypsin digestion of the proteins, labeling of the  
10 resulting peptides with the iTRAQ reagents, pooling samples in a single mix and  
11 fractionation of the labeled peptides by SCX. The 27 initial fractions were collected and  
12 their peptide complexity was determined by MALDI-TOF MS. Low complexity  
13 fractions were pooled, given a total of 12 final fractions. These 12 fractions were  
14 subjected to nanoHPLC-MS/MS in an Orbitrap Velos hybrid mass spectrometer.  
15 Spectra were analyzed with ProteinPilot leading to the identification of 247 proteins  
16 with at least 2 peptides (315 proteins with a single peptide) (Table S-1 in the  
17 Supplementary Material). An experiment with 300  $\mu$ g of depleted serum treated in the  
18 same conditions except for iTRAQ labeling, led to the identification of 235 proteins  
19 (results not shown). This result indicates that iTRAQ labeling with the analytical  
20 conditions used in this study does not substantially modify peptide ionization efficiency  
21 and protein identification. This finding is relevant because the effect of iTRAQ labeling  
22 seems to depend on the analytical system used. For example, iTRAQ labeling increases  
23 the number of identified proteins when using MALDI-TOF-TOF [33], but decreases the  
24 number with pulsed-Q dissociation (PQD) on a dual-pressure linear ion trap LTQ Velos  
25 [34] or with CID on a non-dual-pressure linear ion trap [35]. CID shows better  
26 performance for identification on linear ion traps, so quantification methods that use  
27 isobaric tags usually combine CID fragmentation for identification with PQD or HCD  
28 scans for quantification [36-38]. We have achieved similar protein identification for 8-  
29 plex labeled samples than for label-free samples, showing that the combination of dual-  
30 pressure LIT CID for identification with HCD for quantification, as implemented in the  
31 Orbitrap Velos hybrid mass spectrometer, is advantageous for isobaric tag  
32 quantification workflows.

1 Gene ontology analysis of the identified proteins showed that most of them had  
2 an extracellular location (Figure 3a), as expected. The main activities were defined by  
3 functional classification as binding, catalytic and enzyme regulator (Figure 3b).

#### 4 5 *Quantitative analysis*

6  
7 The iTRAQ label ratios were used for relative quantification of 289 proteins,  
8 237 of them with at least two peptides (Table S-2 in the Supplementary Material).  
9 Comparison of protein abundance between responder and non-responder patients was  
10 used to identify potential biomarkers for prediction of response to infliximab. Statistical  
11 significance rather than fold difference is preferred for selection of proteins showing  
12 differential abundance [39]. Therefore, we have used p-values < 0.05 from t-test  
13 comparisons between the two groups of patients to discover 14 differential proteins  
14 (Table 1 and Figure S-1 in the Supplementary Material). As expected, the AUC values  
15 derived from ROC analyses were concordant with the p-values from the t-tests: with the  
16 most discriminant proteins being identified by the two analyses (Table 1 and Table S-2  
17 in the Supplementary Material). Each value of AUC can be interpreted as the  
18 probability that the biomarker will rank a randomly chosen non-responder higher than a  
19 randomly chosen responder [28]. The AUC value for a perfect test is 1.0, whereas the  
20 value for a completely random test is 0.5. It is commonly accepted that tests with AUC  
21 below 0.75 are unlikely to have interest for clinical use, whereas those with values over  
22 0.75 could be of utility. All the differential proteins in our study were in this later group  
23 with high predictive potential (Table 1) and compare favourably with those previously  
24 identified for prediction of response to treatment in RA [8], with other predictors of  
25 response [40-42] and with other predictors in RA research [43-45]. All the differential  
26 proteins, except for adipocyte plasma membrane-associated protein (APMAP), have  
27 been previously related to RA or to the inflammatory response. These relationships  
28 with inflammation and the disease process could explain that all of them were more  
29 abundant in the non-responder subset of patients than in the responder group. In  
30 addition, as the serum samples were obtained before the start of infliximab treatment, all  
31 of them came from patients with active inflammation because this is a requirement for  
32 the prescription of this drug. The fold difference values should be interpreted  
33 considering that iTRAQ quantification underestimates the abundance differences [46],

1 and therefore some of the results may be possibly more disparate between the two  
2 groups of patients when assessed with other techniques.

3 Results of pathway analysis showed that the differential proteins were  
4 significantly enriched in the inflammatory response and protein synthesis networks  
5 (scores 46 and 41, respectively). These results highlight a potential role for  
6 apolipoproteins and complement factors in the differential response to infliximab  
7 (Figure 4). Among the apolipoproteins, three were significantly more abundant in non-  
8 responder patients: apoB-100, apoA-II and apoM. In addition, apoA-I, apoC-I and  
9 apoC-II were near the significance threshold ( $P$  values  $< 0.08$ ). Proteins of this family  
10 bind lipids to form lipoprotein particles and transport these lipids to tissues. ApoB-100  
11 is the hepatic isoform of apoB. It is the main protein component of low-density  
12 lipoproteins (LDL) that carry most of the cholesterol that is transported to the tissues.  
13 ApoB is the recognition signal for the cellular binding and internalization of LDL, and it  
14 is a very good biomarker for cardiovascular risk [47]. ApoA-I and apoA-II are the main  
15 apolipoproteins of high-density lipoproteins (HDL). ApoA-I is associated with  
16 protection from cardiovascular risk because it promotes cholesterol efflux from tissues  
17 to the liver for excretion. It has been much more extensively studied than apoA-II,  
18 which seems to play a crucial role in triglyceride catabolism [48]. ApoM is also a HDL-  
19 associated apolipoprotein with anti-atherogenic potential probably through an  
20 antioxidant effect [49]. ApoC-I is a component of HDL and is also associated with  
21 triglycerides and cholesterol in very low density lipoproteins (VLDL). ApoC-II is also a  
22 component of VLDL, and it is incorporated to these particles once they are circulating  
23 in the blood. The differences we have found in apolipoproteins should be considered in  
24 the context of the complex interactions between chronic inflammation and lipid  
25 metabolism in RA that we still do not completely understand. An increased mortality of  
26 RA patients due to cardiovascular events has been reported [50]. This increase is partly  
27 due to the adverse serum lipid profile found in untreated patients, low levels of HDL  
28 cholesterol and increased LDL/HDL cholesterol and apoB/apoA-I ratios [51,52]. This  
29 adverse lipid profile could be partially explained by changes in the expression of genes  
30 in the liver or in the reticuloendothelial system as part of the acute phase response. In  
31 addition, inflammation induces changes in the composition of the HDL and LDL  
32 particles and in the clearance of cholesterol [52,53]. The lipid profile improves during  
33 effective treatment, probably as consequence of the control of inflammation [54,55].  
34 Together with these effects of inflammation on apolipoproteins there are also effects of

1 apolipoproteins on inflammation. The most studied effects have been those of apoA-I,  
2 which is anti-inflammatory [56], and apoB, which is proinflammatory [57], but it has  
3 been also reported that apoA II has an anti-inflammatory role [58] and apoC-I a  
4 proinflammatory one [59]. These contrasting effects pose a problem for a simple  
5 interpretation of our results because all the differential apolipoproteins showed higher  
6 levels in the non-responder group than in the responder one. However, recent evidence  
7 indicates that the known roles of apolipoproteins are reversed in a subset of RA patients  
8 that have proinflammatory HDL particles in place of anti-inflammatory HDL, due to  
9 changes in composition [60]. This change of properties has been shown to be a  
10 consequence of the acute phase response [61] and might mean that all the observed  
11 differences in our study are directed towards a more damaging and proinflammatory  
12 lipid profile.

13 Another protein related with lipid metabolism in our significant findings is  
14 APMAP. This protein is a transmembrane protein necessary for adipocyte  
15 differentiation that is increased in obesity models [62], although no relationship with  
16 inflammation or RA have been described.

17 Regarding the other overrepresented functional pathway, there were five  
18 complement-related proteins among the proteins showing significant differences: C4B-  
19 alpha chain, complement factor H-related protein 4 (CFHR4), mannan-binding lectin  
20 serine protease 2 (MASP2), and inter alpha trypsin inhibitor heavy chain H1 (ITIH1)  
21 and H2 (ITIH2). Other four proteins in this pathway showed fold differences over 1.5  
22 but were not significantly different: C8 beta, C8 alpha, C5 and complement factor H-  
23 related protein 3 (CFHR3). C4B is one of the two isotypes of C4, each of them encoded  
24 by a different gene. Upon secretion, the C4 molecules are cleaved in three chains that  
25 remain together as a trimer. The classic and the lectin complement activation pathways  
26 include cleavage of the C4 alpha chain, which we have found different, into the C4a  
27 anaphylotoxin and C4b, which continues with the activation cascade. The different  
28 complement activation pathways converge in C3, whose activation is followed by the  
29 cleavage of C5 in C5a, another anaphylotoxin, and C5b, which initiates the membrane  
30 attack complex. This complex is the effector cytolytic endproduct of the complement  
31 system and includes, among others, complement factors C5b and C8. The latter is made  
32 of three subunits encoded in separated genes: C8 alpha, beta and gamma. CFHR4 is a  
33 member of the CFH family that has recently been identified as promoting complement  
34 activation via the alternative and classic pathways [63]. CFHR3 is a member of the

1 same family that seems to be involved in regulation of the complement system by  
2 inhibiting the activation of C3 [64]. MASP2, in turn, is a serum protease that activates  
3 the lectin pathway via the cleavage of C4 and C2 [65]. Finally, the inter alpha trypsin  
4 inhibitor (I $\alpha$ I) complex is made of two heavy chains ITIH1 and ITIH2 plus bikunin, and  
5 it is a broad spectrum proteinase inhibitor. Among its many targets, it inhibits the early  
6 phases of complement activation by the three pathways: classic, alternative and lectin  
7 [66]. All these differential proteins related to complement can have a role in RA, since  
8 the complement system is activated in the inflamed joints of patients with RA. This  
9 activation state has been shown by the relative consumption of C3 and C4 in the  
10 synovial fluid together with increased concentrations of C5a and the membrane attack  
11 complex [67]. The higher abundance of all these proteins in the non-responder patients  
12 makes it tempting to propose that this subset of patients is characterized by more  
13 complement activation. However, this interpretation should be very cautious because  
14 regulation of the complement system is mainly done at the activation levels and not at  
15 the transcription level, and because ITIH1 and ITIH2 are inhibitors of complement  
16 activation. An additional element to consider is that many components of the  
17 complement system are acute phase reactants and they could be increased as a  
18 consequence of inflammation [68].

19 Other differential proteins in our results were also part of the acute phase  
20 response: ceruloplasmin (CP), thrombospondin (THBS1), vitamin D-binding protein  
21 (GC) and fibronectin (FN1). CP is a ferroxidase enzyme involved in iron transport and  
22 metabolism that has been proposed as a link between iron metabolism and the immune  
23 system [69]. THBS1 is a multifunctional protein that mediates cell-to-cell and cell-to-  
24 matrix interactions. It has been related to RA pathogenesis via the activation of  
25 transforming growth factor beta (TGF $\beta$ ), and more generally to acute and chronic  
26 inflammation through a variety of mechanisms [70]. GC is involved in the transport of  
27 vitamin D and its metabolites to target tissues [71]. It is also the precursor of vitamin D-  
28 binding protein-derived macrophage-activating factor (GcMAF) that results from  
29 enzymatic modifications taking place in B and T cells [72]. GcMAF is a potent activator  
30 of monocyte and macrophage functions that has not yet been specifically studied in RA.  
31 Finally, FN1 is one of the most abundant proteins in inflamed joints of patients with RA  
32 [73], and it is also related with RA as citrullinated FN1. This posttranscriptional  
33 modification and antibodies against it are present in synovial tissue, synovial fluid and  
34 sera of RA patients [74]. In this regard, it is interesting to note that protein citrullination

1 and anti-citrullinated protein antibodies play a central role in the pathophysiology of RA  
2 [75]. Most of the proteins in this group of acute phase reactants have been found at  
3 elevated levels in serum of patients with RA [15,73,76]. However, it is uncertain if their  
4 higher level in the non-responder patients of our study could be ascribed to a more  
5 severe inflammation. The reasons for this doubt are that clinical studies have not  
6 identified any sign of inflammation as predictive of response to infliximab [77], and that  
7 other prominent acute phase reactants, serum amyloid A protein and C-reactive protein,  
8 showed a non-significant excess in the responder group (fold differences 0.8 and 0.65,  
9 respectively). Therefore, we cannot exclude the possibility that the higher abundance of  
10 these proteins is due to specific mechanisms unrelated with the intensity of  
11 inflammation.

12 Finally, gelsolin (GSN) is a protein that does not fit in any of the previous  
13 groups. In blood, it contributes to limit inflammatory responses by acting as a scavenger  
14 binding the actin released by tissue damage, bioactive lipids and proinflammatory  
15 mediators [78]. It is decreased in multiple acute and chronic inflammatory diseases  
16 including RA [79]. Possible mechanisms of this decrease include clearance of the GSN  
17 complexes and trapping of GSN-actin into the inflamed joints in RA. As commented for  
18 the other groups of proteins, it is impossible to know at this stage what could be behind  
19 the higher levels of GSN found in the non-responder group of patients.

20 The only previous study with similar aims has been already mentioned [8]. It  
21 identified six potential proteins that were different between the non-responder and  
22 responder RA patients treated with infliximab. These proteins showed AUC ranging  
23 from 0.761 to 0.846, but not statistical tests or fold differences were reported. Five of  
24 them were more abundant in the non-responder group and only one in the responder  
25 patients, which is a direction of differences similar to our findings. Four of the proteins  
26 were not further characterized because the authors used SELDI-TOF-MS and needed  
27 purification for identification. The two identified proteins were also present in our  
28 analysis. Platelet factor 4 was more abundant in the non-responder patients in both  
29 studies (fold difference NR/R = 1.39; AUC = 0.81 in our samples), but the difference  
30 was not significant in our analysis ( $P = 0.2$ ). It has been also highlighted as a biomarker  
31 for prediction of response to infliximab in a Crohn's disease study showing also higher  
32 concentration in the non-reponder patients [80]. Therefore, platelet factor 4 seems a  
33 good candidate biomarker although it did not came in the top list of our study. The  
34 second protein, apoA-1 showed contrasting results. It was almost significantly more

1 abundant in the non-responder patients in our study, as already discussed, whereas it  
2 was more abundant in responder patients than in non-responder ones in Trocmé et al.  
3 [8]. This discordant result serves us to remind that all these results need to be replicated  
4 in new studies because of the exploratory nature of the previous and the current studies.

## 6 **Conclusions**

8 This report is the first label-based quantitative proteomics study aimed at  
9 discovering potential serum biomarkers for prediction of response to biologics in RA.  
10 The results have been encouraging in several respects: the number of identified proteins,  
11 the dynamic range of concentrations they covered, and the number of differential  
12 proteins between the two groups compared. The panel of differential proteins needs  
13 further verification and clinical validation, but already it has been possible to notice that  
14 most of these proteins are known to be related with important processes in RA and  
15 many of them are known to show altered levels or function related with RA or chronic  
16 inflammation. Therefore, we expect that they will help establish approaches to classify  
17 RA patients as responders and non-responders to infliximab before the beginning of the  
18 treatment, in order to treat anticipated non-responders with an alternative drug.

## 20 **Conflict of interest statement**

21 All authors declare there are no financial/commercial conflicts of interest.

## 23 **Acknowledgments**

24 This work has been supported by PRIME-XS project (grant agreement number 262067)  
25 funded by 7th Framework Program of the European Union, by grant 11/01048 and by  
26 RETICS Program, RD08/0075 (RIER) of the Instituto de Salud Carlos III (Spain) that  
27 are partially financed by the European Regional Development Fund of the European  
28 Union.

## 30 **References**

31  
32 [1] Scott DL, Wolfe F, Huizinga TW. Rheumatoid arthritis. *Lancet* 2010;376:1094-  
33 108.



- 1 [2] Rutgeers, P., Van Assche, G., Vermiere, S. Optimizing anti-TNF treatment in  
2 inflammatory bowel disease. *Gastroenterology* 2004, 126, 1593-1610.
- 3 [3] Isaacs JD, Ferraccioli G. The need for personalised medicine for rheumatoid arthritis.  
4 *Ann Rheum Dis* 2011;70:4-7.
- 5 [4] Emery P, Dörner T. Optimising treatment in rheumatoid arthritis: a review of  
6 potencial biological markers of response. *Ann Rheum Dis* 2011;70:2063-70.
- 7 [5] Fabre S, Dupuy AM, Dossat N, Guisset C, Cohen JD, Cristol JP, Daures JP,  
8 Jorgensen C. Protein biochip array technology for cytokine profiling predicts  
9 etanercept responsiveness in rheumatoid arthritis. *Clin Exp Immunol*  
10 2008;153:188-95.
- 11 [6] Hueber W, Tomooka BH, Batliwalla F, Li W, Monach PA, Tibshirani RJ, Van  
12 Vollenhoven RF, Lampa J, Saito K, Tanaka Y, Genovese MC, Klareskog L,  
13 Gregersen PK, Robinson WH. Blood autoantibody and cytokine profiles predict  
14 response to anti-tumor necrosis factor therapy in rheumatoid arthritis. *Arthritis*  
15 *Res Ther* 2009;11:R76.
- 16 [7] Fabre S, Guisset C, Tatem L, Dossat N, Dupuy AM, Cohen JD, Cristol JP, Daures  
17 JP, Jorgensen C. Protein biochip array technology to monitor rituximab in  
18 rheumatoid arthritis. *Clin Exp Immunol* 2009;155:395-402.
- 19 [8] Trocmé C, Marotte H, Baillet A, Ballot-Prades B, Garin J, Grange L, Miossec P,  
20 Tebib J, Berger F, Nissen MJ, Juvin R, Morel F, Gaudin P. Apolipoprotein A-I  
21 and platelet factor 4 are biomarkers for infliximab response in rheumatoid  
22 arthritis. *Ann Rheum Dis* 2009;68:1328-33.
- 23 [9] Liao H, Wu J, Kuhn E, Chin W, Chang B, Jones MD, O'Neil S, Clauser KR, Karl J,  
24 Hasler F, Roubenoff R, Zolg W, Guild BC. Use of mass spectrometry to identify  
25 protein biomarkers of disease severity in the synovial fluid and serum of patients  
26 with rheumatoid arthritis. *Arthritis Rheum* 2004;50:3792-803.
- 27 [10] Uchida T, Fukawa A, Uchida M, Fujita K, Saito K. Application of a novel protein  
28 biochip technology for detection and identification of rheumatoid arthritis  
29 biomarkers in synovial fluid. *J Proteome Res* 2002;1:495-9.
- 30 [11] De Seny D, Fillet M, Meuwis MA, Geurts P, Lutteri L, Ribbens C, Bours V,  
31 Wehenkel L, Piette J, Malaise M, Merville MP. Discovery of new rheumatoid  
32 arthritis biomarkers using the surface-enhanced laser desorption/ionization time-  
33 of-flight mass spectrometry ProteinChip approach. *Arthritis Rheum*  
34 2005;52:3801-12.

- 1 [12]Jin EH, Shim SC, Kim HG, Chae SC, Chung HT. Polymorphisms of COTL1 gene  
2 identified by proteomic approach and their association with autoimmune disorders.  
3 *Exp Mol Med* 2009;41:354-61.
- 4 [13]Zheng X, Wu SL, Hincapie M, Hancock WS. Study of the human plasma proteome  
5 of rheumatoid arthritis. *J. Chromatogr. A* 2009;1216:3538–45.
- 6 [14]Goëb V, Thomas-L’Otellier M, Daveau R, Charlionet R, Fardellone P, Le Loët X,  
7 Tron F, Gilbert D, Vittecoq O. Candidate autoantigens identified by mass  
8 spectrometry in early rheumatoid arthritis are chaperones and citrullinated  
9 glycolytic enzymes. *Arthritis Res Ther* 2009;11:R38.
- 10 [15]Li TW, Zheng BR, Huang, ZX, Lin Q, Zhao LK, Liao ZT, Zhao JJ, Lin ZM, Gu JR.  
11 Screening disease-associated proteins from sera of patients with rheumatoid  
12 arthritis: a comparative proteomic study. *Chin Med J (Engl)* 2010;123:537-43.
- 13 [16]Serada S, Fujimoto M, Ogata A, Terabe F, Hirano T, Iijima H, Shinzaki S,  
14 Nishikawa T, Ohkawara T, Iwahori K, Ohguro N, Kishimoto T, Naka T. iTRAQ-  
15 based proteomic identification of leucine-rich alpha-2 glycoprotein as a novel  
16 inflammatory biomarker in autoimmune diseases. *Ann Rheum Dis* 2010;69:770–4.
- 17 [17]Van Steendam K, Tilleman K, De Ceuleneer M, De Keyser F, Elewaut D, Deforce  
18 D. Citrullinated vimentin as an important antigen in immune complexes from  
19 synovial fluid of rheumatoid arthritis patients with antibodies against citrullinated  
20 proteins. *Arthritis Res Ther* 2010;12:R132.
- 21 [18]Long L, Li R, Li Y, Hu C, Li Z. Pattern-based diagnosis and screening of  
22 differentially expressed serum proteins for rheumatoid arthritis by proteomic  
23 fingerprinting. *Rheumatol Int* 2011;31:1069-74.
- 24 [19]Zhang X, Yuan Z, Shen B, Zhu M, Liu C, Xu W. Discovery of serum protein  
25 biomarkers in rheumatoid arthritis using MALDI-TOF-MS combined with  
26 magnetic beads. *Clin Exp Med* 2011;Epub ahead of print.
- 27 [20]Mateos J, Lourido L, Fernández-Puente P, Calamia V, Fernández-López C, Oreiro  
28 N, Ruiz-Romero C, Blanco FJ. Differential protein profiling of synovial fluid  
29 from rheumatoid arthritis and osteoarthritis patients using LC-MALDI-TOF/TOF.  
30 *J. Proteomics* 2012;75:2869-78.
- 31 [21]Sekigawa I, Yanagida M, Iwabuchi K, Kaneda K, Kaneko H, Takasaki Y, Jung G,  
32 Sone S, Tanaka Y, Ogawa H, Takamori K. Protein biomarker analysis by mass  
33 spectrometry in patients with rheumatoid arthritis receiving anti-tumor necrosis  
34 factor-alpha antibody therapy. *Clin Exp Rheumatol* 2008;26:261–7.

- 1 [22] Dwivedi RC, Dhindsa N, Krokhn OV, Cortens J, Wilkins, JA, El-Gabalawy HS.  
2 The effects of infliximab therapy on the serum proteome of rheumatoid arthritis  
3 patients. *Arthritis Res Ther* 2009;11:R32.
- 4 [23] Surinova S, Schiess R, Hüttenhain R, Cerciello F, Wollscheid B, Aeberdold R. On  
5 the development of plasma protein biomarkers. *J Proteome Res* 2011;10:5-16.
- 6 [24] Arnett FC, Edworthy SM, Bloch DA, McShane DJ, Fries JF, Cooper NS, Healey  
7 LA, Kaplan SR, Liang MH, Luthra HS, et al. The American Rheumatism  
8 Association 1987 revised criteria for the classification of rheumatoid arthritis.  
9 *Arthritis Rheum* 1988;31:315-24.
- 10 [25] Van Gestel AM, Haaqsmas CJ, van Riel PL. Validation of rheumatoid arthritis  
11 improvement criteria that include simplified joint counts. *Arthritis Rheum*  
12 1998;41:1845-50.
- 13 [26] Shilov IV, Seymour SL, Patel AA, Loboda A, Tang WH, Keating SP, Hunter CL,  
14 Nuwaysir LM, Schaeffer DA. The Paragon Algorithm: a next generation search  
15 engine that uses sequence temperature values and feature probabilities to identify  
16 peptides from tandem mass spectra. *Mol Cell Proteomics* 2007;6:1638-55.
- 17 [27] Elias JE, Gygi SP. Target-decoy search strategy for increased confidence in large-  
18 scale protein identifications by mass spectrometry. *Nat Methods* 2007;4:207-14.
- 19 [28] Linden A. Measuring diagnostic and predictive accuracy in disease management:  
20 an introduction to receiver operating characteristic (ROC) analysis. *J Eval Clin*  
21 *Pract* 2006;12:132-9.
- 22 [29] Wader KF, Fagerli UM, Holt RU, Stordal B, Borset M, Sundan A, Waage A.  
23 Elevated serum concentrations of activated hepatocyte growth factor activator in  
24 patients with multiple myeloma. *Eur J Haematol* 2008;81:380-3.
- 25 [30] Cunningham SK, Loughlin T, Culliton M, McKenna TJ. Plasma sex hormone-  
26 binding globulin levels decrease during the second decade of life irrespective of  
27 pubertal status. *J Clin Endocrinol Metab* 1984;58:915-8.
- 28 [31] Mash DC, Adi N, Duque L, Pablo J, Kumar M, Ervin FR. Alpha synuclein protein  
29 levels are increased in serum from recently abstinent cocaine abusers. *Drug*  
30 *Alcohol Depend* 2008;94:246-50.
- 31 [32] Tönjes A, Fasshauer M, Kratzsch J, Stumvoll M, Blüher M. Adipokine pattern in  
32 subjects with impaired fasting glucose and impaired glucose tolerance in  
33 comparison to normal glucose tolerance and diabetes. *PLoS One* 2010;5:e13911.

- 1 [33]Ernoul E, Gamelin E, Guette C. Improved proteome coverage by using iTRAQ  
2 labelling and peptide OFFGEL fractionation. *Proteome Sci* 2008;6:27.
- 3 [34]Löbner C, Blackstock W, Gunaratne J. Enhanced performance of pulsed Q collision  
4 induced dissociation-based peptide identification on a dual-pressure linear ion trap.  
5 *J Am Soc Mass Spectrom* 2012;23:186-9.
- 6 [35]Pichler P, Köcher T, Holzmann J, Mazanek M, Taus T, Ammerer G, Mechtler K.  
7 Peptide labeling with isobaric tags yields higher identification rates using iTRAQ  
8 4-plex compared with TMT 6-plex and iTRAQ 8-plex on LTQ Orbitrap. *Anal*  
9 *Chem* 2010;82:6549-58.
- 10 [36]Guo T, Gan CS, Zhang H, Zhu Y, Kon OL, Sze SK. Hybridization of pulsed-Q  
11 dissociation and collision-activated dissociation in linear ion trap mass  
12 spectrometer for iTRAQ quantitation. *J Proteome Res* 2008;7:4831-40.
- 13 [37]Zhang Y, Ficarro SB, Li S, Marto JA. Optimized orbitrap HCD for quantitative  
14 analysis of phosphopeptides. *J Am Soc Mass Spectrom* 2009;20:1425-34.
- 15 [38]Köcher T, Pichler P, Schutzbier M, Stingl C, Kaul A, Teucher N, Hasenfuss G,  
16 Penninger JM, Mechtler K. High precision quantitative proteomics using iTRAQ  
17 on a LTQ Orbitrap: a new mass spectrometric method combining the benefits of  
18 all. *J Proteome Res* 2009;8:4743-52.
- 19 [39]Noirel J, Evans C, Salim M, Mukherjee J, Ow SY, Pandhal J, Pham TK, Biggs CA,  
20 Wright PC. Methods in quantitative proteomics: setting iTRAQ on the right track.  
21 *Curr Proteomics* 2011;8:17-30.
- 22 [40]Wessels JA, van der Kooij SM, le Cessie S, Kievit W, Barerra P, Allaart CF,  
23 Huizinga TW, Guchelaar HJ. A clinical pharmacogenetic model to predict the  
24 efficacy of methotrexate monotherapy in recent-onset rheumatoid  
25 arthritis. *Arthritis Rheum* 2007;56:1765-75.
- 26 [41]Raterman HG, Vosslander S, de Ridder S, Nurmohamed MT, Lems WF, Boers M,  
27 van de Wiel M, Dijkmans BA, Verweij CL, Voskuyl AE. The interferon type I  
28 signature towards prediction of non-response to rituximab in rheumatoid arthritis  
29 patients. *Arthritis Res Ther* 2012;14:R95.
- 30 [42]Aletaha D, Funovits J, Keystone EC, Smolen JS. Disease activity early in the  
31 course of treatment predicts response to therapy after one year in rheumatoid  
32 arthritis patients. *Arthritis Rheum* 2007;56:3226-35.
- 33 [43]van der Helm-van Mil AH, Toes RE, Huizinga TW. Genetic variants in the  
34 prediction of rheumatoid arthritis. *Ann Rheum Dis* 2010;69:1694-6.

- 1 [44] van der Helm-van Mil AH, le Cessie S, van Dongen H, Breedveld FC, Toes RE,  
2 Huizinga TW. A prediction rule for disease outcome in patients with recent-onset  
3 undifferentiated arthritis: how to guide individual treatment decisions. *Arthritis*  
4 *Rheum* 2007;56:433-40.
- 5 [45] Validation of a prediction rule for disease outcome in patients with recent-onset  
6 undifferentiated arthritis: moving toward individualized treatment decision-  
7 making. van der Helm-van Mil AH, Detert J, le Cessie S, Filer A, Bastian H,  
8 Burmester GR, Huizinga TW, Raza K. *Arthritis Rheum* 2008;58:2241-7.
- 9 [46] Ow SY, Salim M, Noirel J, Evans C, Rehman I, Wright PC. iTRAQ  
10 underestimation in simple and complex mixtures: The good, the bad and the ugly.  
11 *J Proteome Res* 2009;8:5347-55.
- 12 [47] Sierra-Johnson J, Fisher RM, Romero-Corral A, Somers VK, Lopez-Jimenez F,  
13 Ohrvik J, Walldius G, Hellenius ML, Hamsten A. Concentration of apolipoprotein  
14 B is comparable with the apolipoprotein B/apolipoprotein A-I ratio and better than  
15 routine clinical lipid measurements in predicting coronary heart disease mortality:  
16 findings from a multi-ethnic US population. *Eur Heart J* 2009;30:710-7.
- 17 [48] Julve J, Escola-Gil JC, Rotllan N, Fievet C, Vallez E, de la Torre C, Ribas V, Sloan  
18 JH, Blanco-Vaca F. Human apolipoprotein A-II determines plasma triglycerides  
19 by regulating lipoprotein lipase activity and high-density lipoprotein proteome.  
20 *Arterioscler Thromb Vasc Biol* 2010;30:232-8.
- 21 [49] Elsøe S, Ahnström J, Christoffersen C, Hoofnagle AN, Plomgaard P, Heinecke JW,  
22 Binder CJ, Björkbacka H, Dahlbäck B, Nielsen LB. Apolipoprotein M binds  
23 oxidized phospholipids and increases the antioxidant effect of HDL.  
24 *Atherosclerosis* 2012;221:91-7.
- 25 [50] Aviña-Zubieta JA, Choi HK, Sadatsafavi M, Etminan M, Esdaille JM, Lacaille D.  
26 Risk of cardiovascular mortality in patients with rheumatoid arthritis: a meta-  
27 analysis of observational studies. *Arthritis Rheum* 2008;59:1690-7.
- 28 [51] Park YB, Lee SK, Lee WK, Suh CH, Lee CW, Lee CH., Song CH, Lee J. Lipid  
29 profiles in untreated patients with rheumatoid arthritis. *J Rheumatol.*  
30 1999;26:1701-4.
- 31 [52] Steiner G, Urowitz MB. Lipid Profiles in Patients with Rheumatoid Arthritis:  
32 Mechanisms and the Impact of Treatment. *Semin Arthritis and Rheum*  
33 2009;38:372-81.

- 1 [53] Choy E, Sattar N. Interpreting lipid levels in the context of high-grade  
2 inflammatory states with a focus on rheumatoid arthritis: a challenge to  
3 conventional cardiovascular risk actions. *Ann Rheum Dis* 2009;68:460-9.
- 4 [54] Park YB, Choi HK, Kim MY, Lee WK, Song J, Kim DK, Lee SK. Effects of  
5 antirheumatic therapy on serum lipid levels in patients with rheumatoid arthritis: a  
6 prospective study. *Am J Med* 2002;113:188-93.
- 7 [55] Daïen CI, Duny Y, Barnetche T, Daurès JP, Combe B, Morel J. Effect of TNF  
8 inhibitors on lipid profile in rheumatoid arthritis: a systematic review with meta-  
9 analysis. *Ann Rheum Dis* 2012;71:862-8.
- 10 [56] Hyka N, Dayer JM, Modoux C, Kohno T, Edwards CK 3rd, Roux-Lombard P,  
11 Burger D. Apolipoprotein A-I inhibits the production of interleukin-1beta and  
12 tumor necrosis factor-alpha by blocking contact-mediated activation of monocytes  
13 by T lymphocytes. *Blood* 2001;97:2381-9.
- 14 [57] Ketelhuth DF, Rios FJ, Wang Y, Liu H, Johansson ME, Fredrikson GN, Hedin U,  
15 Gidlund M, Nilsson J, Hansson GK, Yan ZQ. Identification of a danger-  
16 associated peptide from apolipoprotein B100 (ApoBDS-1) that triggers innate  
17 proatherogenic responses. *Circulation* 2011;124:2433-43.
- 18 [58] Gomaschi M, Sinagra G, Serdoz LV, Pitzorno C, Fonda M, Cattin L, Calabresi L,  
19 Franceschini G. The plasma concentration of Lpa-I:A-II particles as a predictor of  
20 the inflammatory response in patients with ST-elevation myocardial infarction.  
21 *Atherosclerosis*. 2009;202:304-11.
- 22 [59] Schippers EF, Berbée JFP, Van Disseldorp IM, Versteegh MIM, Havekes LM,  
23 Rensen PCN, Van Dissel JT. Preoperative apolipoprotein CI levels correlate  
24 positively with the proinflammatory response in patients experiencing  
25 endotoxemia following elective cardiac surgery. *Intensive Care Med*  
26 2008;34:1492-7.
- 27 [60] Watanabe J, Charles-Schoeman C, Miao Y, Elashoff D, Yin Lee Y, Katselis G, Lee  
28 TD, Reddy ST. Proteomic profiling following immunoaffinity capture of high-  
29 density lipoprotein: Association of acute-phase proteins and complement factors  
30 with proinflammatory high-density lipoprotein in rheumatoid arthritis. *Arthritis*  
31 *Rheum* 2012;64:1828-37.
- 32 [61] Van Lenten BJ, Hama SY, de Beer FC, Stafforini DM, McIntyre TM, Prescott SM,  
33 La Du BN, Fogelman AM, Navab M. Anti-inflammatory HDL becomes pro-  
34 inflammatory during the acute phase response. Loss of protective effect of HDL

- 1 against LDL oxidation in aortic wall cell cocultures. *J Clin Invest* 1995;96:2758-  
2 67.
- 3 [62] Bogner-Strauss JG, Prokesch A, Sanchez-Cabo F, Rieder D, Hackl H, Duszka K,  
4 Krogsdam A, Di Camillo B, Walenta E, Klatzer A, Lass A, Pinent M, Wong WC,  
5 Eisenhaber F, Trajanoski Z. Reconstruction of gene association network reveals a  
6 transmembrane protein required for adipogenesis and targeted by PPAR $\gamma$ . *Cell*  
7 *Mol Life Sci* 2010;67:4049-64.
- 8 [63] Hebecker M, Józsi M. Factor H-related protein 4 activates complement by serving  
9 as a platform for the assembly of an alternative pathway C3 convertase via its  
10 interaction with C3b protein. *J Biol Chem* 2012;287:19528-36.
- 11 [64] Fritsche LG, Lauer N, Hartmann A, Stippa S, Keilhauer CN, Oppermann M,  
12 Pandey MK, Köhl J, Zipfel PF, Weber BH, Skerka C. An imbalance of human  
13 complement regulatory proteins CFHR1, CFHR3 and factor H influences risk for  
14 age-related macular degeneration (AMD). *Hum Mol Genet* 2010;19:4694-704.
- 15 [65] Thiel S, Vorup-Jensen T, Stover CM, Schwaeble W, Laursen SB, Poulsen K, Willis  
16 AC, Eggleton P, Hansen S, Holmskov U, Reid KB, Jensenius JC. A second serine  
17 protease associated with mannan-binding lectin that activates complement. *Nature*  
18 1997;386:506-10.
- 19 [66] Okroj M, Holmquist E, Sjölander J, Corrales L, Saxne T, Wisniewski HG, Blom  
20 AM. Heavy Chains of Inter Alpha Inhibitor (I $\alpha$ I) Inhibit the Human Complement  
21 System at Early Stages of the Cascade. *J Biol Chem*. 2012;287:20100-10.
- 22 [67] Solomon S, Kassahn D, Illges H. The role of the complement and the Fc $\gamma$ R system  
23 in the pathogenesis of arthritis. *Arthritis Res Ther* 2005;7:129-35.
- 24 [68] Gabay C, Kushner I. Acute-phase proteins and other systemic responses to  
25 inflammation. *N Engl J Med* 1999;340:448-54.
- 26 [69] Banha J, Marques L, Oliveira R, Martins MF, Paixao E, Pereira D, Malhó R,  
27 Penque D, Costa L. Ceruloplasmin expression by human peripheral blood  
28 lymphocytes: a new link between immunity and iron metabolism. *Free Radic Biol*  
29 *Med* 2008;44:483-92.
- 30 [70] Lopez-Dee Z, Pidcock K, Gutierrez LS. Thrombospondin-1: multiple paths to  
31 inflammation. *Mediators Inflamm* 2011;2011:296069.
- 32 [71] Speeckaert MM, Wehlou C, Vandewalle S, Taes YE, Robberecht E, Delangue JR.  
33 Vitamin D binding protein, a new nutritional marker in cystic fibrosis patients.  
34 *Clin Chem Lab Med* 2008;46:365-70.

- 1 [72] Yamamoto N, Homma S. Vitamin D3 binding protein (group-specific component)  
2 is a precursor for the macrophage-activating signal factor from  
3 lysophosphatidylcholine-treated lymphocytes. *Proc Natl Acad Sci U S A*  
4 1991;88:8539–43.
- 5 [73] Clemmensen I, Holund B, Andersen RB. Fibrin and fibronectin in rheumatoid  
6 synovial membrane and rheumatoid synovial fluid. *Arthritis Rheum* 1983;26:479-  
7 85.
- 8 [74] van Beers JJ, Willemze A, Stammen-Vogelzangs J, Drijfhout JW, Toes RE, Pruijn  
9 GJM. Anti-citrullinated fibronectin antibodies in rheumatoid arthritis are  
10 associated with human leukocyte antigen-DRB1 shared epitope alleles. *Arthritis*  
11 *Res Ther* 2012;14:R35.
- 12 [75] van Venrooij WJ, Pruijn GJM. An important step towards completing the  
13 rheumatoid arthritis cycle. *Arthritis Res Ther* 2008;10:117.
- 14 [76] Rico MC, Manns JM, Driban JB, Uknis AB, Kunapuli SP, dela Cadena RA.  
15 Thrombospondin-1 and transforming growth factor beta are pro-inflammatory  
16 molecules in rheumatoid arthritis. *Transl Res* 2008;152:95-8.
- 17 [77] Emery P, Dörner T. Optimising treatment in rheumatoid arthritis: a review of  
18 potential biological markers of response. *Ann Rheum Dis* 2011;70:2063-70.
- 19 [78] Bucki R, Kulakowska A, Byfield FJ, Zendzian-Piotrowska M, Baranowski M,  
20 Marzec M, Winer JP, Ciccarelli NJ, Górski J, Drozdowski W, Bittman R, Janmey  
21 PA. Plasma gelsolin modulates cellular response to sphingosine 1-phosphate. *Am*  
22 *J Physiol Cell Physiol* 2010;299:C1516-23.
- 23 [79] Osborn TM, Verdrengh M, Stossel TP, Tarkowski A, Bokarewa M. Decreased  
24 levels of the gelsolin plasma isoform in patients with rheumatoid arthritis.  
25 *Arthritis Res Ther* 2008;10:R117-R117.
- 26 [80] Meuwis MA, Fillet M, Lutteri L, Marée R, Geurts P, de Seny D, Malaise M,  
27 Chapelle JP, Wehenkel L, Belaiche J, Merville MP, Louis E. Proteomics for  
28 prediction and characterization of response to infliximab in Crohn's disease: a  
29 pilot study. *Clin Biochem* 2008;41:960-7.
- 30  
31  
32  
33  
34



1 **Figure captions.**

2  
3 **Figure 1.** Discovery-driven experimental workflow of the study. R, responder; NR,  
4 non-responder; CID, collision-induced dissociation; HCD, higher-energy collisional  
5 dissociation.

6  
7 **Figure 2.** Depletion of the 6 highest abundance proteins from serum. 10% NuPAGE  
8 Bis-Tris 1-DE gel image of the different protein fractions.

9  
10 **Figure 3.** Gene ontology (GO) annotation of identified serum proteins according to (a)  
11 cellular location; and (b) molecular function.

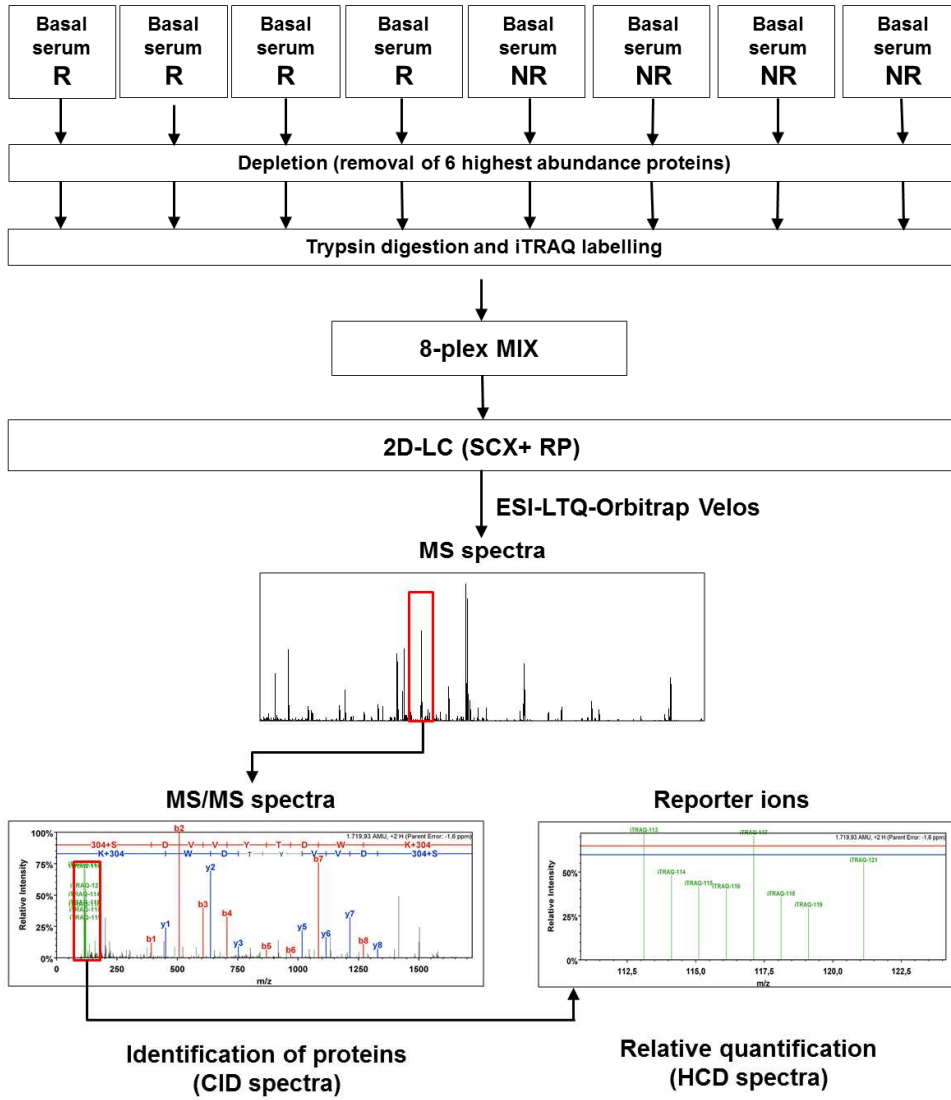
12  
13 **Figure 4.** Pathway analysis of proteins that showed differential abundance between  
14 responder and non-responder patients with RA treated with infliximab. Direct  
15 interactions are shown. Proteins with R/NR ratios  $> 1.5$  are in green, and with NR/R  
16 ratios  $> 1.5$  are in red. Merged two top score networks are shown (immune and  
17 inflammatory response, score 46, and protein synthesis, score 41), centered on low-  
18 density lipoprotein (LDL) and high-density lipoprotein (HDL) as reflected by the  
19 number of interactions.

1 **Table 1.** Serum proteins showing differential abundance between the responder and  
 2 non-responder patients with RA treated with infliximab.

<b>Accessio n number</b>	<b>Protein name</b>	<b>Non-responder/ Responder</b>	<b>p-val</b>	<b>AUC</b>
D6RAK8	Vitamin D-binding protein splicing variant GC-006	5.359	0.0386	1
P00450	Ceruloplasmin	3.375	0.0178	1
P04114	Apolipoprotein B-100	2.198	0.0348	0.938
P19823	Inter-alpha-trypsin inhibitor heavy chain H2	2.072	0.0230	1
P07996	Thrombospondin-1	1.994	0.0319	1
Q6U2E9	Complement C4-B alpha chain	1.971	0.0315	0.938
P19827	Inter-alpha-trypsin inhibitor heavy chain H1	1.785	0.0388	0.938
P06396	Gelsolin	1.718	0.0328	1
P02652	Apolipoprotein A-II	1.718	0.0414	1
P02751-7	Fibronectin isoform 7	1.682	0.0340	0.938
C9J7J7	Complement factor H-related protein 4	1.680	0.0486	0.875
O95445	Apolipoprotein M	1.601	0.0325	1
Q9HDC9	Adipocyte plasma membrane-associated protein	1.508	0.0219	1
O00187	Mannan-binding lectin serine protease 2	1.336	0.0246	0.938

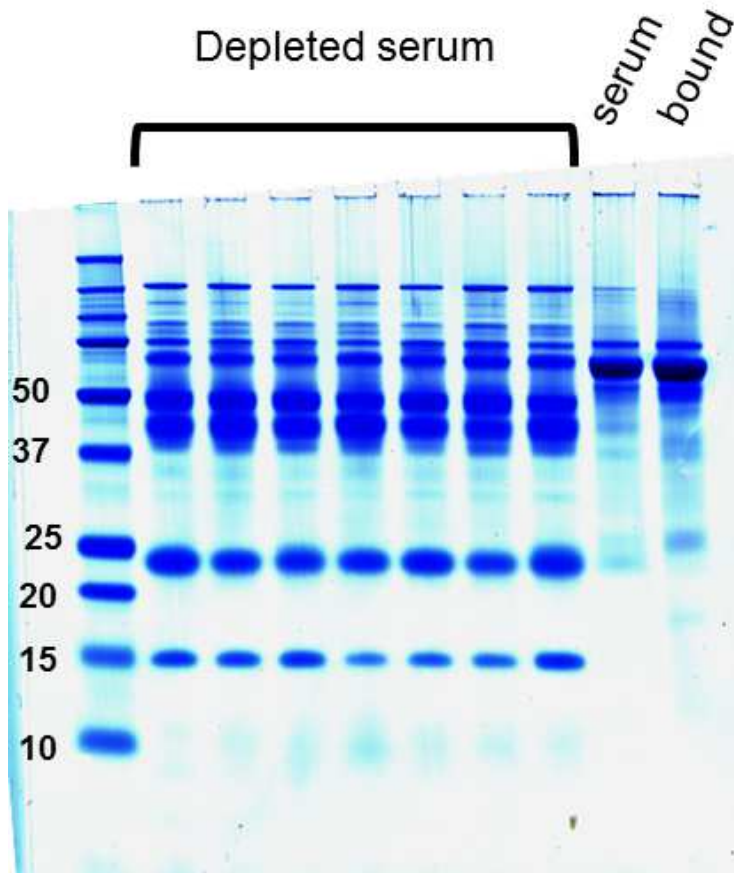
3  
4  
5  
6  
7  
8  
9  
10  
11  
12  
13  
14  
15  
16  
17  
18  
19  
20  
21

1  
2  
3  
4



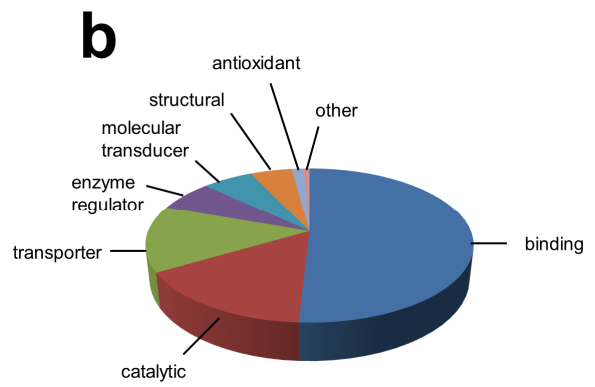
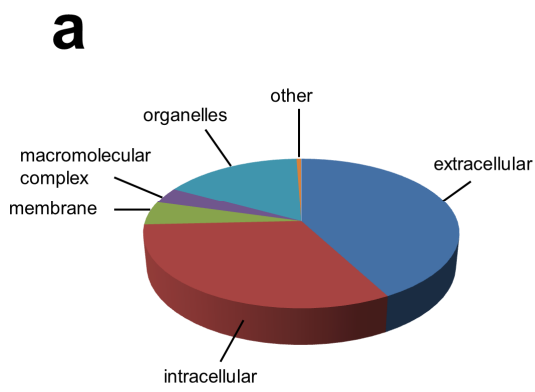
5  
6  
7  
8  
9  
10  
11  
12  
13  
14

1  
2



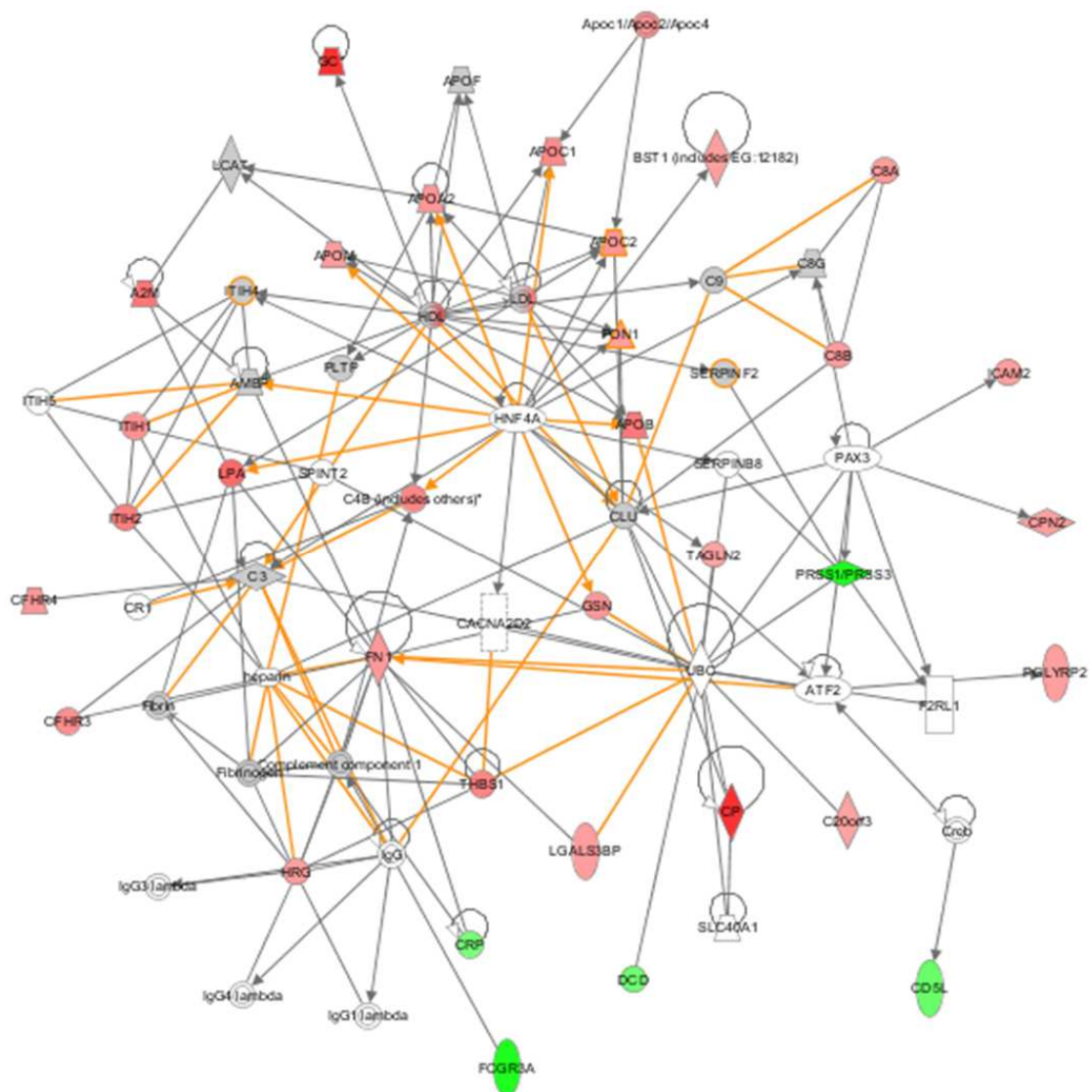
3  
4  
5  
6  
7  
8  
9  
10  
11  
12  
13  
14  
15  
16  
17  
18

1  
2  
3  
4  
5  
6  
7  
8



9  
10  
11  
12  
13  
14  
15  
16  
17  
18  
19  
20  
21  
22  
23  
24  
25  
26  
27

1



2